

Automate. Optimize. Increase Quality. Save Energy.



OUR VISION

Intelligent Technology to Increase Your Success

Meeting Highest Industry Demands

PSI Technics is known for its expertise in industrial image processing and automation technology. We leverage our know-how in these fields to analyze and optimize automated warehouse and production processes to ensure an efficient use of resources and to prolong the life-span of intralogistics facilities.

Our developers create custom industry and application-specific applications based on digital imaging processing systems to increase the quality and productivity of our customers' products and processes.

PSI Technics offers reliable solutions for companies across all industries that provide added value for its customers. Market-leading companies around the world rely on PSI Technics as a system integrator and full-service provider.

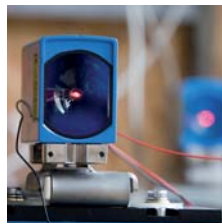
Contents

Our Vision	2
History & Portfolio	4
Automation Technology	6
Industrial Image Processing	8
Sensor Protection / Cooling	10
Consulting & Analyses	12
Service & Maintenance	14
Your Benefit	16
Clients	18





Passion



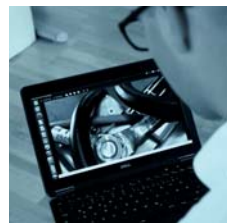
Expertise



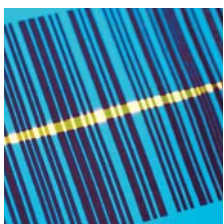
Accuracy



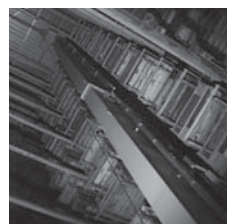
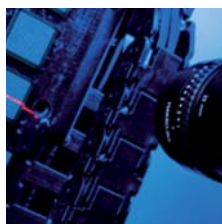
Reliability



Efficiency



Creativity



HISTORY & PORTFOLIO

About PSI Technics GmbH

Developing the Next Generation of Products

Increasing efficiency while lowering costs – this is what drives and motivates PSI Technics, a company specializing in industrial automation with headquarters in Germany. PSI Technics provides solutions for supply chains, intralogistics and industrial material handling facilities that eliminate production-related bottlenecks and increase production throughput.

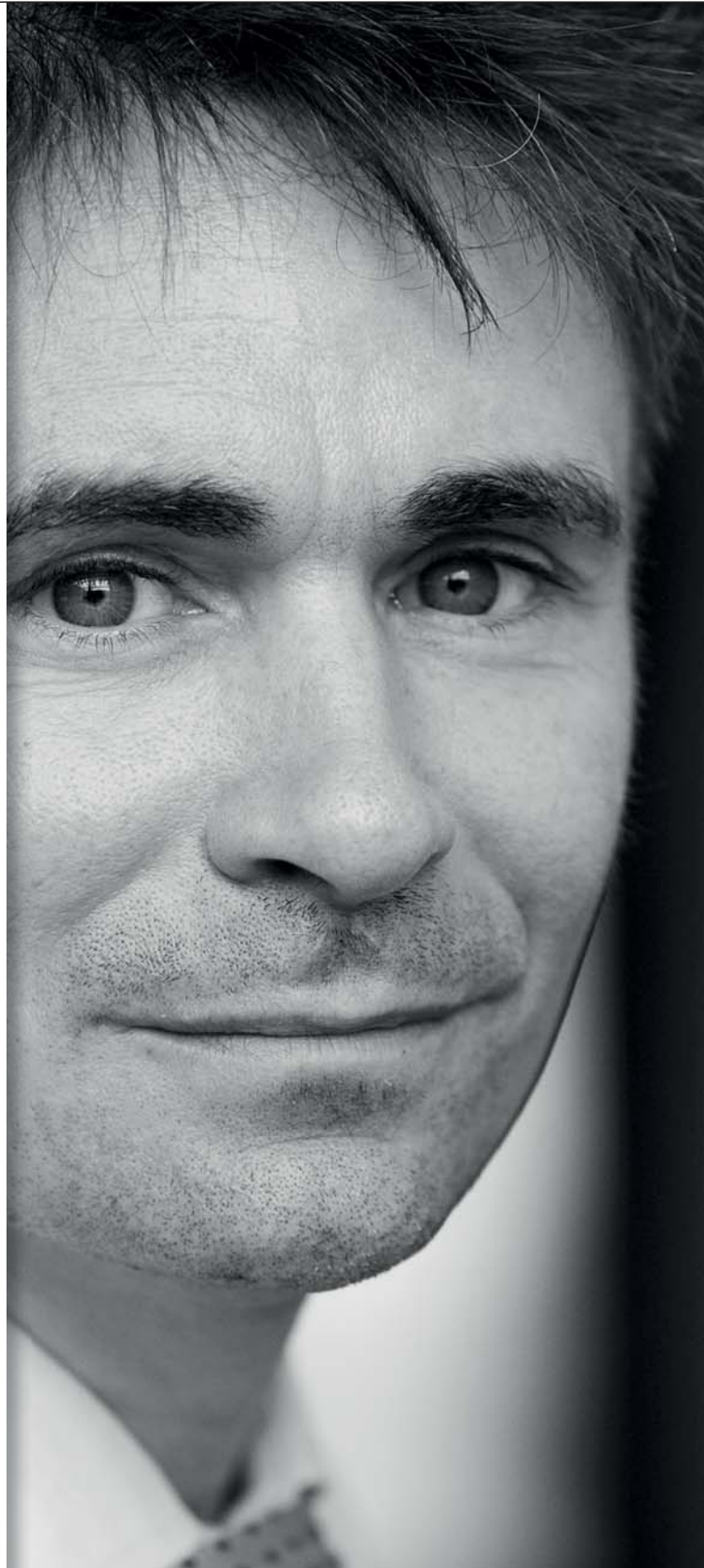
Karl-Heinz Förderer founded PSI Technics in 2005 based on his positioning system expertise gained at Trimble Navigation. By developing the ARATEC Positioning Solution System Mr. Förderer and his team laid the foundation of PSI Technics, paving the way for the modernization of intralogistics facilities.

In just a few brief years the company established itself as a professional international provider of advanced software solutions that are tailored to the clients' needs. As an expert supplier of software control solutions for industrial material handling and conveyor systems, PSI Technics has extensive experience with industrial efficiency requirements.

Research Projects and Feasibility Studies for External Clients

With regard to research and development, PSI Technics has proven to be a competent and reliable partner to a wide variety of companies and organizations.

Aside from developing innovative solutions and setting new benchmarks for its expanding product and service portfolio, PSI Technics offers research and development services for clients in a wide range of industries, including feasibility studies that can provide solid base for complex industrial projects.





The PSI Technics Service Portfolio

Global market leaders in various industries rely on solutions from PSI Technics. Renowned companies such as Volkswagen, BMW, Bosch, Daimler, SKF or AK Steel benefit from solutions provided by PSI Technics.



SENSOR PROTECTION / COOLING

PSI Technics supplies a variety of products and services that make production processes more efficient and economical. For example, the company's award-winning sensor protection case significantly extends the lifetime of optical sensors in logistics and production environments. It prevents costly process interruptions and downtimes by protecting optical sensors from excessive heat, cold, weather conditions and dust. It considerably increases the sensor's working life while guaranteeing precise measurements – even under the most extreme conditions.



AUTOMATION TECHNOLOGY

By enabling significant cost reductions, PSI Technics is setting new standards in the field of control technology. Compared to traditional positioning solutions, PSI Technics' ARATEC Positioning Solution System features an automatic machine model identification and a self-learning algorithm that is energy efficient and reduces machine wear.



CONSULTING & ANALYSES

When it comes to optimizing the performance of existing installations or the retrofitting of automated systems, PSI Technics assists you every step of the way – from analyzing the actual conditions to modernization and maintenance for machines of all makes and models. PSI Technics' portfolio includes motion analyses for identifying optimization potential in existing facilities as well as system solutions to help customers realize those optimization potentials. Using virtual modeling, PSI Technics offers you a *glimpse into the future of your installation*, which helps customers to identify potential problems or weak spots to prevent downtimes.



INDUSTRIAL IMAGE PROCESSING

In addition, PSI Technics offers industrial image processing solutions to facilitate quality control to further enhance process optimization. The company's image processing solutions are used for fully automatic and continuous facility and process inspections to ensure that every link in the production chain works as it should.

Digital camera systems and sensors are an integral part of PSI Technics' complete industrial image processing solutions. As a full-service provider and systems integrator PSI Technics is your ideal partner. We provide you with all components and complete solutions from a single source – from consulting to delivery and installation or integration to service and maintenance.



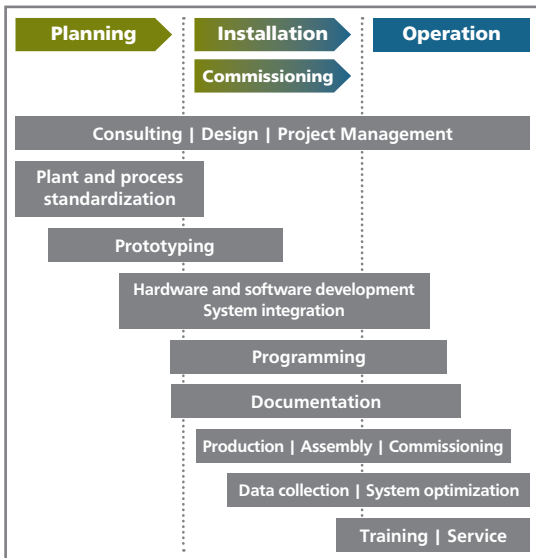
PRODUCTS AND SERVICES

Automation Technology

Factory automation simplifies and improves processes in production and logistics

Automation technology ensures maximum process safety and ease of use. System integration and optimization lead to faster, more transparent and increasingly flexible processes. They minimize production costs, ensure that existing resources are used to their fullest capacity and enhance the quality of your products – competitive advantages that are crucial for your business.

PSI Technics assists you every step of the way



Our Services – Your Advantages:

- >> Faster motion sequences in warehouses
- >> System independent
- >> Time-optimization and increased throughput
- >> Faster storage and retrieval cycles
- >> Optimized travel profile reduces wear and tear
- >> Extended product life cycle
- >> Reduced production and process costs

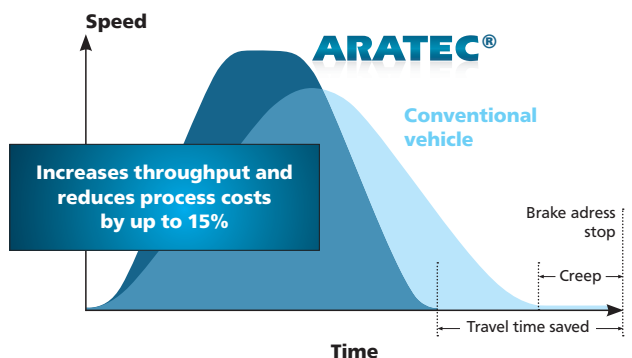
ARATEC® – the advanced industrial control and positioning system for material handling in automated storage facilities

PSI Technics’ motion analysis offering allows, for the first time, a comprehensive evaluation of logistics facilities to reveal hidden optimization potentials. Oscillations are most frequently caused by traditional positioning solutions that do not adequately account for the behavior of industrial vehicles. This leads to increased wear, premature failures and high cycle times, which leads to lower throughput and added costs.

The Positioning Solution System ARATEC® is the cutting-edge solution for industrial positioning. A common application for ARATEC® includes fully automated high-bay warehouses. The positioning system instructs stacker cranes to move to warehouse target coordinates and ensures that storage and retrieval tasks are carried out with high precision and efficiency.

ARATEC® can be implemented in installations from all PLC and drive manufacturers and works with all types of motor drives and controllers. It also works with older installations that use DC converters. The positioning system, therefore, enables the continued use of existing components such as PLCs, converters and motor drives after retrofitting, providing considerable benefits and cost-savings to the customer.

ARATEC® time savings during short movements vs. traditional positioning systems





**A case study from the automotive industry:
Modernizing the positioning systems increases
throughput at the vehicle body warehouse at the
Mercedes Benz factory in Düsseldorf, Germany**

Since the previously installed positioning system had been discontinued and spare part availability for this system is extremely limited, Daimler AG was looking for a new, long-term solution that would not require changes to existing controls or drives.

Requirements: high reliability, fast installation and a supplier with prior installation references in automotive logistics.

Optimized logistics control improves the utilization and extends the life span of the installation

- >> Retrofitting and commissioning of the first stacker crane with PSI Technics' ARATEC® Positioning Solution System within a single day.
- >> Using the FLP6000EOS Energy Optimizing Software to achieve an optimum travel profile that reduces wear and optimizes energy consumption.
- >> The interface of the ARATEC® Positioning Solution System is 100% compatible with the previously installed system.
- >> ARATEC® substantially improved warehouse throughput by 15%, while the system's optimized travel profile simultaneously reduces machine wear and tear.

Modernization and optimization of a positioning system used in a vehicle body warehouse

Stacker crane lifting height: 77 ft
 Traveling distance: 95.14 ft
 $v_x \text{ max} = 1,344 \text{ mm/s (264.43ft/min)}$
 $v_y \text{ max} = 602 \text{ mm/s (118.43 ft/min)}$

**Mercedes Benz Factory,
Düsseldorf, Germany**



„Prior to modernization spare parts for the old system were increasingly difficult to obtain and warehouse productivity no longer met the Daimler AG's high standards.

Thanks to PSI Technics' ARATEC® Positioning Solution System warehouse positioning operations are faster and more reliable than ever.

Another important modernization requirement was to guarantee the availability of the existing warehouse until at least 2018 – an additional aspect in favor of PSI Technics' ARATEC® Positioning Solution System. The system seamlessly integrates into the existing warehouse infrastructure.

In addition, the FLP6000EOS software reduces facility wear and benefits the energy budget. The solution ensured that Daimler AG's clearly formulated initial requirements for the modernization process were more than met.“

ARATEC® applications:

Crane systems (e. g., bridge cranes), stacker cranes, hoists, shuttle cars, material lifts, conveyor systems etc.

ARATEC®'s optional add-ons:

- >> FLP6000EOS Energy Optimizing Software
- >> MA6000MC Motion Analyzing Software
- >> FLP6000AOC Advanced Oscillation Control
- >> FLP6000ASC Advanced Skew Control Software
- >> Tandem solutions



PRODUCTS AND SERVICES

Industrial Image Processing

Camera-based solution for quality assurance, process and cost optimization

PSI Technics' industrial image processing uses camera technology and laser sensors. It is the ideal solution for the automated inspection of industrial processes and guarantees safe, reliable production, contributing to quality and process improvements.

PSI Technics offers easy-to-use, application-specific digital image processing solutions that are designed for the continuous monitoring and quality control of production processes. Nearly all monitoring and measuring tasks can be automated by means of industrial image processing.

For example, powerful 2D and 3D cameras or smart cameras identify defective products during the early stages of the manufacturing process – considerably cutting costs and improving line production as well as automated production processes. The camera systems are suitable for all industries and have proven reliable in harsh industrial environments.

Our Services – Your Advantages:

- >> Optimized workflow
- >> Safe and reliable production processes
- >> Early detection of defects and automatic redirection of damaged products
- >> Reduced expenses for manual and/or visual tests and inspections,
- >> Replaces several sensors with one flexible camera
- >> Avoids production downtime caused by defects
- >> Industrial imaging quality assurance leads to improved product quality and productivity
- >> Tremendous cost savings due to significantly reduced downtimes
- >> Increased customer satisfaction

State-of-the-art digital imaging technology complements or replaces manual and visual inspections in manufacturing processes:

MEASURE

- >> Length, width, height
- >> Area, volume, size
- >> Object count

MONITOR

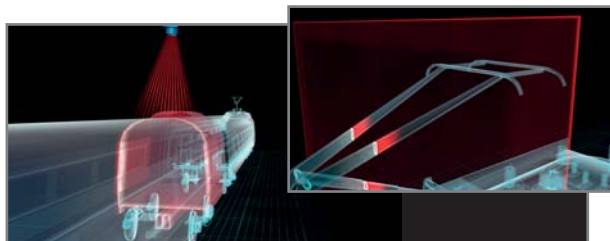
- >> Correct assembly
- >> Form
- >> Surface area

DETERMINE

- >> Physical presence
- >> Position (x,y), (x,y,z)

IDENTIFY

- >> Text and icons
- >> Codes and patterns



Modern camera technology significantly reduces maintenance intervals and costs, e. g. for visual inspection of multiple-unit trains.

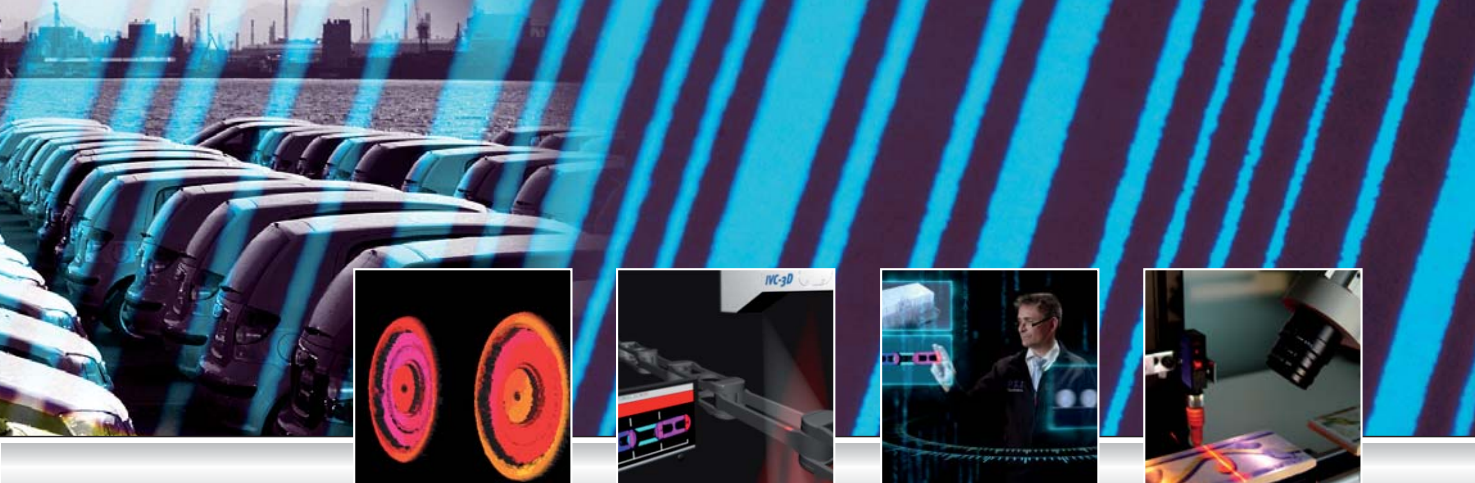
Industries and applications:

Automotive, transportation, passenger and freight traffic (road, rail, sea), metal coating plants, abattoirs, food industry, foundries, domestic appliances and many more – Plus (using hyperspectral imaging): Pharmaceutical industry, recycling industry, woodworking industry, mining industry etc.

PSI Technics' Hyperspectral Imaging

Wherever a detailed material analyses cannot be achieved by using conventional image processing systems, hyperspectral imaging offers an entire range of new possibilities.

To learn more please visit www.psi-technics.com/E



**A case study from the automotive industry:
Reliable systems guarantee operational and process stability at Volkswagen AG, Germany**

An industrial image processing system (Inline Control System) prevents disruptions at a Power & Free Golf vehicle assembly line at Volkswagen AG in Wolfsburg, Germany.

The Inline Control System analyzes the wheels of chain-driven trolleys that are passing through the assembly line. The 3D cameras take three-dimensional images to detect trolley wheel damage.

Every picture is analyzed directly inside the camera. If excessive wear or abrasion is detected, the wheel is damaged, and the camera issues a signal that is used to automatically reroute the defective trolley to a service track for repairs. In addition, all images of damaged trolleys are transmitted to and stored on a server.

**Jürgen Bastek,
Manager of Maintenance,
Volkswagen AG:**



„The fully automated inspection of our Power & Free installation guarantees a smooth production process. A product that was quick to install and would provide a reliable trolley wheel inspection was important to us. We wanted to proactively detect material fatigue to avoid corrective measures. Costly production downtimes are a thing of the past.“



**2D/3D SMART camera system
for inspecting trolley wheels in
Power & Free conveyors
(overhead rail chain conveyor)**

Image analysis

- Trolley wheel inspection
- Trolley IDs are read

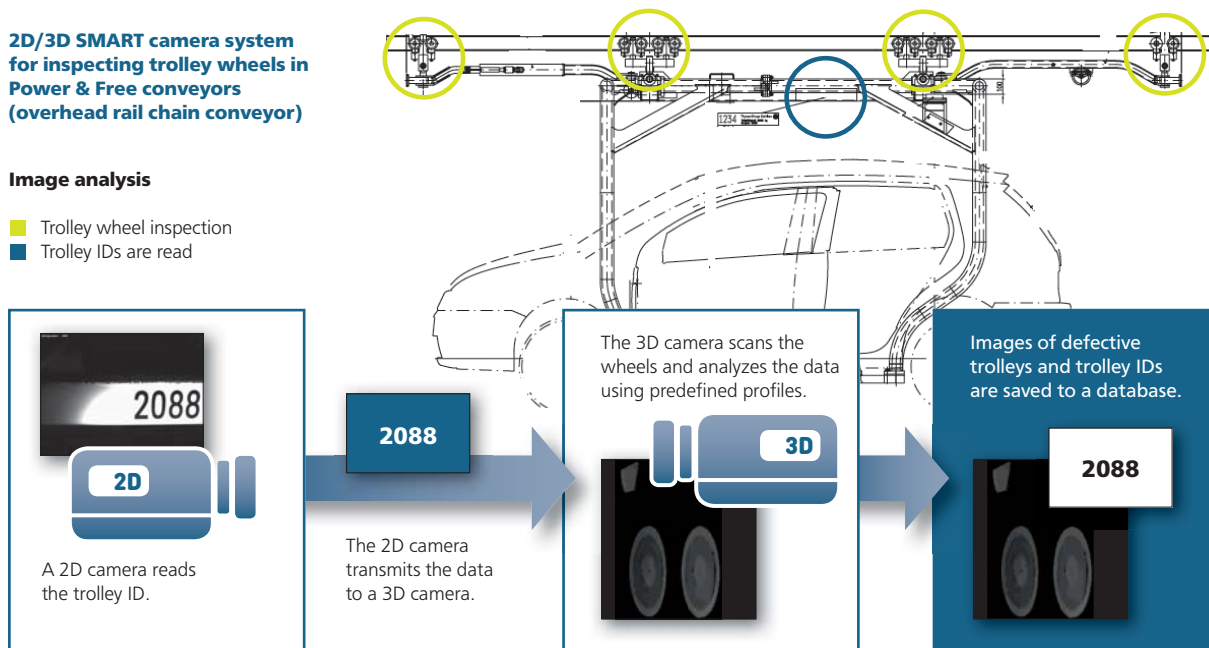


Image Source: Volkswagen AG



PRODUCTS AND SERVICES

Sensor Protection / Cooling

Sensor protection and cooling opens up a wealth of previously impossible applications for sensitive sensors

Industrial environments are often subject to harsh conditions such as humidity, dust and extreme temperatures. PSI Technics has addressed these conditions – the PSI Technics family of Sensor Protection Cases offers a powerful and reliable solution that protects sensors from malfunctions and failures caused by temperatures, weather conditions and dust. Their use considerably increases the diode life-span of optical measurement systems and guarantees precise measurements.



The cases are designed for use with various pulse emitters like laser distance meters, optical data transmission systems, optical scanners, camera systems or optical data light barriers.

Our Services – Your Advantages:

- >> Opens up a whole range of previously impossible sensor applications
- >> Significantly increases the diode life-span of optical laser systems
- >> Guarantees precise measurements
- >> Compatible with most common sensor brands
- >> Maintenance-free
- >> Easy integration into existing measuring systems
- >> No additional installations required
- >> Dramatically reduces downtimes and repair costs

Protected by the TPCC®, optical sensors can now be used in environments where high temperatures and radiant heat previously either completely prevented the use or significantly reduced the life span of optical sensors (for example, in iron and steel production facilities).



Typical applications:

- >> Metal industry – particularly iron, steel and aluminum
- >> Paper industry
- >> Food industry
- >> Aircraft and automotive industry
- >> Surface technology
- >> Ceramics industry
- >> General logistics, and many more

PSI Technics' sensor protection solutions at a glance:

TPCC® (Thermo Protection Cooling Case)

Optimal protection from heat or temperature fluctuations in high-temperature environments of up to 176°F (+80°C)

TPCC-H (TPCC® – Heated Version)

Provides integrated heating and optimal protection in low-temperature environments down to -40°F (-40°C)

TPCC-CH (TPCC® – Cooling and Heating)

Optimal protection at an extended temperature range of -4°F to 167°F (-20°C to +75°C)

PSI Technics Sensor Protection Case

Optimal protection from harsh weather conditions and dust



**A case study from the construction industry:
In addition to the modernization of a bridge crane's skew control PSI Technics provides optimum protection from high temperatures and temperature fluctuations for Hanson Pipe & Precast's laser sensors**

Hanson Pipe & Precast is one of the world's largest concrete pipe manufacturers, and the largest manufacturer of concrete products in North America. It is part of Lehigh Hanson, Inc., a member of the Heidelberg Cement Group and one of North America's largest suppliers of heavy building materials to the construction industry. In March 2011, the company's St. Martinville, Louisiana, facility decided to integrate PSI Technics' state-of-the art ARATEC® Positioning Solution System into their fully automated crane system as part of the modernization of their existing facilities.

The high temperatures at the Hanson Pipe & Precast site constituted another challenge. The wet concrete pipes are steam-treated at the plant while curing. As a result, environmental temperatures in the production hall exceed 140°F (+60°C) – a significant disadvantage, since it not only shortens the life-span of laser sensors, but it can also lead to higher maintenance costs.

To eliminate the risk of malfunctioning sensors in the future, the sensors will be protected by PSI Technics Thermo Protection Cooling Case (TPCC®).

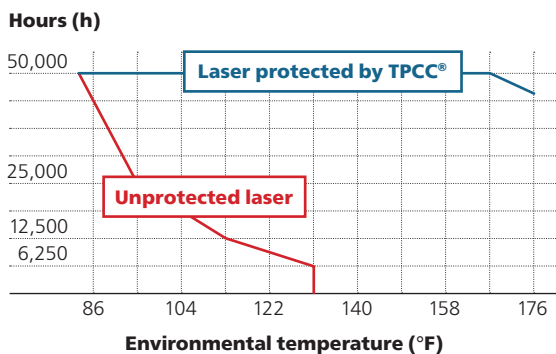


**Ben Schmidgall,
Chief Automation Engineer,
Hawkeye Pedershaab**

„The PSI Technics team members are all highly professional and their expertise in every phase of the implementation: pre-sale planning, pre-installation site audit, installation and commissioning and post-sale service allowed the conversion to occur seamlessly.

The PSI Technics solution offered many advanced improvements from the old system: Off-the-shelf lasers; cooling options to extend the life of the lasers; Ethernet-based communication for remote assistance; data logging, graphing, and backup features.“

The TPCC® increases the life-span of your laser



The graph above shows how a laser distance meter's life-span decreases when it is used unprotected in environments where temperatures exceed 122°F (+50°C).

On left: TPCC® used on the bridge crane after modernization

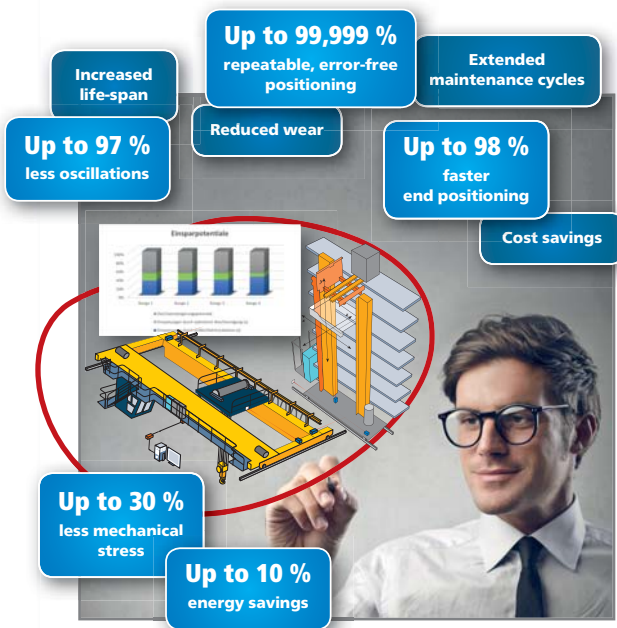


PRODUCTS AND SERVICES

Consulting & Analyses

Professional consulting for intralogistics optimization and modernization

PSI Technics leverages over 20 years of experience in the field of intralogistics to provide precise analyses for automated warehouses and to identify optimization potential. Renowned customers from around the world rely on our intralogistics products and services. We help you to maximize your resources and optimize your goods and materials flow to give you a competitive edge.



Our Services – Your Advantages:

- >> Identification of weak spots and optimization potential in your intralogistics facility
- >> Consultation and implementation from a single source
- >> Increased throughput and profitability based on proven and effective measures
- >> Reduced maintenance and repairs

To reveal optimization potential in automated warehouses PSI Technics considers three essential factors:

1. A kinematic analysis of the rail-guided vehicles in your facility

To perform a motion-related (kinematic) analysis in your automated warehouse PSI Technics uses his industry-first, unique and proven motion analyzing system that includes a Motion Analyzing Software as well as corresponding sensors to identify often unrealized disturbances that are measurably impacting the ability of your warehouse to achieve the results you need.

2. Analysis of the logistic process

PSI Technics takes an in-depth look at the logistics processes in your warehouse and identify optimization potentials in your value chain. The approach includes analyzing and evaluating your warehouse management system (WMS), the material flow of individual goods as well as picking zones, motion-related processes and handling times for incoming or outgoing goods to identify and eliminate bottlenecks. Hypotheses or assumptions can be verified by means of virtual modeling.

3. ROI analysis

PSI Technics calculates potential cost savings and turnover increases for you that are based on the analysis data for enhanced ASRS throughput. PSI Technics also calculates the investment risk that is associated with potential improvements and the corresponding ROI.





**A case study from the automotive industry:
Virtual modeling reveals huge optimization potentials at Volkswagen AG**

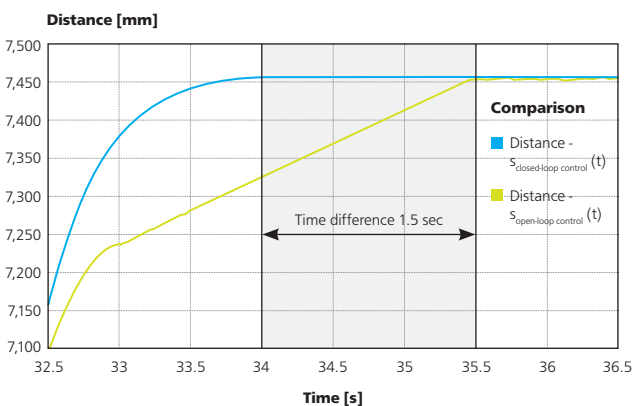
The Volkswagen AG Conveyor Technology Planning department (PWG-P/F) commissioned PSI Technics to analyze and evaluate a vertical material lift in a vehicle body warehouse. The successful cooperation was aimed at developing a new positioning standard for similar vertical lifting systems.

Virtual modeling provides reliable data and extensive insights into machine behavior

Virtual modeling – an analysis of machine behavior via computer modeling – was used to simulate all relevant system components and to digitally recreate a variety of different loading conditions. Volkswagen’s goal was to reveal optimization potential with regard to improving cycle times, system stability and reduced wear. By using virtual modeling, different drive and closed-loop configurations could be compared and evaluated with regard to their cost-benefit ratio prior to retrofitting the vertical material lift.

A motion analysis was performed to determine the system’s current motion profile, which provided a basis for identifying optimization potential. All existing loading conditions and motion sequences were simulated in a **virtual model using finite**

Stress comparison between the PLC-controlled system (green) and the system with closed-loop positioning control (blue)



**Jens Schischke,
Conveyor Technology
Planning Department
(PWG-P/F), Volkswagen AG**



„With the ARATEC® system PSI Technics not only provided us with an efficient long-term solution that helps us to cut costs, but with state-of-the-art positioning technology for our Wolfsburg factory.“

element methods (FEM), multi-body models and controller modeling. FEM is an accepted method of obtaining detailed analysis data. The results were verified against the actual operation of the system and illustrated the benefits of using an intelligent positioning controller versus the more common PLC- or drive-based open-loop control generally designed by OEMs and system integrators. In general, a stress reduction of 10% that can be achieved based on the analysis results can increase a system’s lifespan by 50%.

The retrofitted vertical lift fulfilled and exceeded all of Volkswagen’s expectations regarding cycle times, stability, reduced wear and power consumption. As calculated the system’s mechanical stress was reduced by more than 15%. At the same time, power consumption decreased and cycle times were reduced by 30%.



SERVICE & MAINTENANCE

Powerful Performance

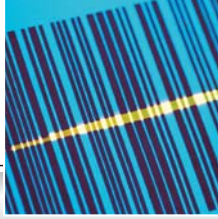
We provide you with the most efficient and optimized solutions for your business.

PSI Technics' approach to modernizing logistics applications is to diagnose before prescribing. To accomplish this, we recommend starting every project with a detailed site audit to better understand the existing application and determine opportunities for enhanced efficiency, improved safety, increased throughput and energy savings through the use of the ARATEC® Positioning Solution System and accompanying intelligent software.

This emphasizes our commitment to provide added value and increased benefits to our customers.

Our commitment to our customers:

- >> Inquiries to our PSI Technics hotline will be handled with priority
- >> On-site system and installation check
- >> On-site service
- >> Guaranteed support, 24 hours a day, 7 days a week
- >> Repair and maintenance services



**Marc Valkeneers, Technical Coordinator,
SKF Tongeren, Belgium:**

"Due to the modular design of the positioning system ARATEC® we were able to distribute the costs and to gradually modernize the stacker cranes in our high-bay warehouse. ARATEC® completely replaced the previously used positioning units - without the need to replace existing system components or drives. Based on the system's machine modeling, we were able to improve our motion path efficiency."

YOUR BENEFIT

PSI Technics Continues to Exceed Your Expectations

Creative engineering and a wealth of experience with a broad range of hardware and software systems enable us to offer custom solutions for your business. We provide you with expert advice, custom design and service, as well as all required hardware and software components – from a single source.

Our application engineers and technicians provide expert advice and use their extensive expertise to leverage the development process and to optimize the performance of your system.

You, too, can benefit from becoming a PSI Technics partner – we continuously work to provide you with the safest, most efficient and optimized solutions for your business.

Awards and memberships:

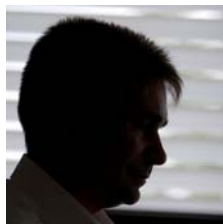




Resilience



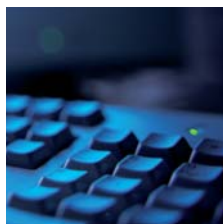
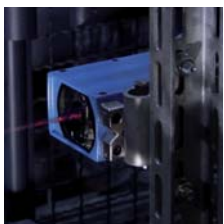
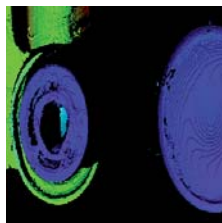
Courage



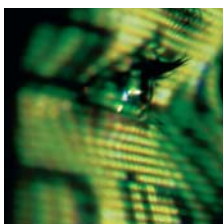
Enthusiasm



Ingenuity



Intelligence



Consistency



CLIENTS

Renowned Companies that Demand High Quality

Our products and solutions are used by renowned international companies across all industries.

ABL Technic
AK Steel
Aleris
Automation Machine Design
Corus
Daimler
Döhler
Edelstahlwerke Südwestfalen
Erbslöh Aluminium
Grüwe
Hanson Pipe & Precast
Hong Kong Air Cargo Terminals Limited
Konecranes
Logan Aluminum
Novelis
Ovako
Rhodius
Robert Bosch
Rotalec Group, Inc.
Salzgitter Stahlhandel
Sapa Alluminio Ornago S.p.A.
Schüco International
Shanghai General Motors
SIBELCO Deutschland
SKF
Solvay Chemicals
Stahlton Bauteile
Stollwerck
TRW Automotive
Volkswagen



**Thomas Knebel, Maintenance Planner,
Automotive Aftermarket,
Robert Bosch GmbH, Karlsruhe, Germany:**

"PSI Technics' staff is highly qualified and responsive. Due to the system's integration flexibility, we were able to modernize three shuttle cars in the shortest possible time without having to change any system components or drives. The modernization of each shuttle car didn't take longer than half a day. Apart from the easy installation, we were so impressed with the increased efficiency of the new system that we already ordered ten additional ARATEC® systems that are not only going to replace older systems but will also be used for new installations."

**Jens Schischke, Conveyor Technology,
Planning department (PWG-P/F),
Volkswagen AG, Germany:**

"With the ARATEC® system PSI Technics not only provided us with an efficient long-term solution that helps us to cut costs, but with state-of-the-art positioning technology for our Wolfsburg factory."

**Guenter Sommerer, Equipment Planning,
BMW AG, Landshut Factory, Germany:**

"No malfunctions occurred after the TPCC® was installed and downtimes caused by sensor malfunctions were completely eliminated. The TPCC® perfectly protects the SICK DT500 sensor from heat, effectively preventing measurement errors. The sensor's susceptibility to the high radiant heat that previously led to a loss of production was completely remedied and BMW's investment in the TPCC® paid off very quickly."

**Mercedes Benz Factory,
Düsseldorf, Germany:**

"Prior to modernization spare parts for the old system were increasingly difficult to obtain and warehouse productivity no longer met the Daimler AG's high standards. Thanks to PSI Technics' ARATEC® Positioning Solution System warehouse positioning operations are faster and more reliable than ever. Another important modernization requirement was to guarantee the availability of the existing warehouse until at least 2018 - an additional aspect in favor of PSI Technics' ARATEC® Positioning Solution System. The system seamlessly integrates into the existing warehouse infrastructure. In addition, the FLP6000EOS software reduces facility wear and benefits the energy budget. The solution ensured that Daimler AG's clearly formulated initial requirements for the modernization process were more than met."

**Toby Wong, Technical Coordinator,
Hong Kong Air Cargo Terminals Ltd. (Hactl):**

"The references of PSI Technics' positioning solution and the excellent service quality were crucial for our investment decision."

**Ben Schmidgall, Chief Automation Engineer,
Hawkeye Pedershaab, Hanson Pipe & Precast
HEIDELBERG CEMENT Group:**

"The PSI Technics team members are all highly professional and their expertise in every phase of the implementation: pre-sale planning, pre-installation site audit, installation and commissioning and post-sale service allowed the conversion to occur seamlessly. The PSI Technics solution offered many advanced improvements from the old system: Off-the-shelf lasers; cooling options to extend the life of the lasers; Ethernet-based communication for remote assistance; data logging, graphing, and backup features."



SMART SOLUTIONS THAT MAXIMIZE
QUALITY AND PRODUCTIVITY

PSI Technics GmbH

Rudolf-Diesel-Straße 21a | 56220 Urmitz | Germany
Tel. +49 (0) 2630 91590-0 | Fax +49 (0) 2630 91590-99
info@psi-technics.com

www.psi-technics.com/E