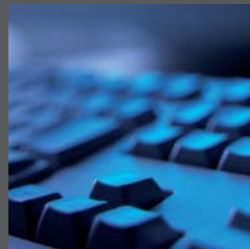


SMART SOLUTIONS THAT MAXIMIZE QUALITY AND PRODUCTIVITY





OUR VISION

Storage & Retrieval Simplified. Increase Quality. Save Energy.

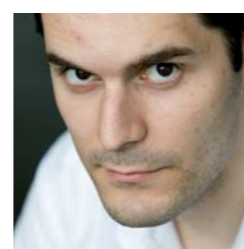
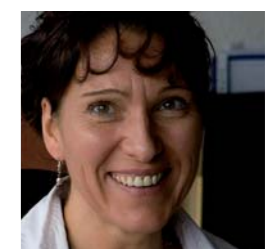
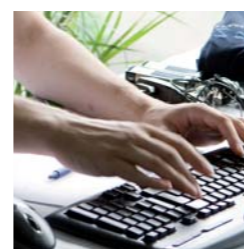
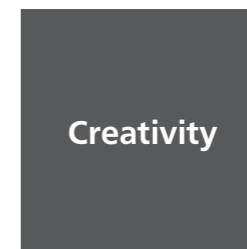
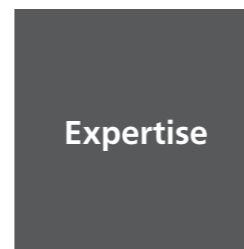
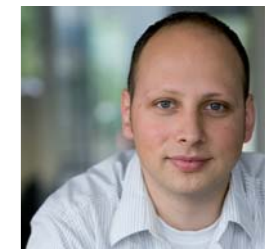
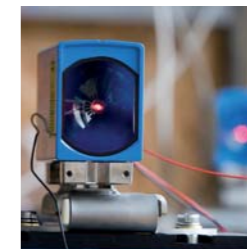
Meeting Highest Industry Demands

PSI Technics, with headquarters in Urmitz/Rhein, Germany, specializes in research and development in the field of positioning technology to offer solutions that are tailored to the clients' needs and to simplify the integration of positioning technology into existing installations.

Moreover, PSI Technics' performance in the field of system integration leaves the leading standards far behind. What the competition promotes as product advantages merely constitutes the foundation for PSI Technics.

PSI Technics' portfolio of products and services emphasizes the company's commitment to provide added value and increased benefits to its customers.

You, too, can benefit from becoming a PSI Technics partner – we continuously work to provide you with the safest, most efficient and optimized solutions for your business.





COMPANY HISTORY

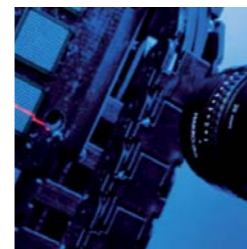
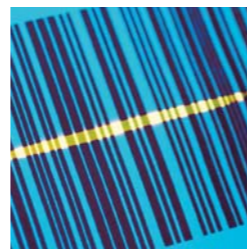
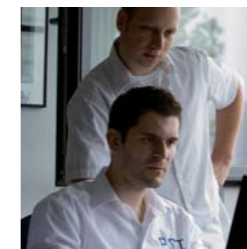
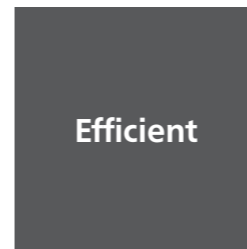
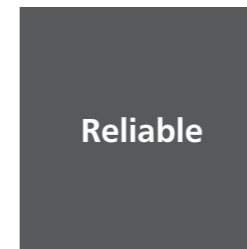
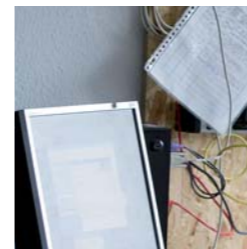
Positioning Solutions International Technics

Developing the Next Generation of Products

PSI Technics designs, develops and distributes innovative positioning solutions for a wide range of applications in trade and industry internationally, with a main focus on Europe, North America and Asia.

Karl-Heinz Förderer founded Positioning Solutions International Technics Ltd. in 2005, after the ICS5000 positioning system and ASC skew control product lines were discontinued by the US-based company Trimble Navigation Ltd.

PSI Technics was focused on providing maintenance and support for existing installations and on finding alternatives for ICS5000 and ACS systems. Karl-Heinz and his team of software and electrical engineers developed the Positioning Solution System as an advanced replacement for the discontinued Trimble products.



PSI Technics Products and Services



PSI Technics is Your Reliable Partner for Intelligent and Efficient Solutions in the Following Fields:

- >> Factory automation
- >> Industrial positioning systems
- >> Industrial image processing
- >> Thermal protection of temperature-sensitive sensors
- >> EMC analyses
- >> Safety engineering
- >> Temperature & humidity monitoring and analysis

Apart from developing thermoelectric generators, PSI Technics offers research and development services as well as feasibility studies for clients from a wide range of industries. From consulting to engineering to service and maintenance, PSI Technics provides you with essential components and complete solutions – from a single source.

Factory Automation

Process Optimization for Warehouse Logistics

Sophisticated software products combined with custom project management create a powerful and transparent process control system for manufacturing and warehousing. Factory automation leads to faster processes, minimizes production costs, ensures that existing resources are used to their fullest capacity and enhances the quality of your products – competitive advantages that are crucial for your business.

PSI Technics – Your Advantage:

- >> Comprehensive support and optimization, including third-party processes and products
- >> Accelerated motion sequences in warehouses
- >> Custom-developed solutions
- >> Extensive technical know-how
- >> Industry-independent
- >> Fast response, available 24/7
- >> Intelligent commissioning tools ensure reduced start-up times



Industrial Positioning Systems

Progress in Positioning Technology has a Name: Positioning Solution System

The Positioning Solution System is an advanced industrial control and positioning system for material handling in automated storage facilities. The Positioning Solution System instructs stacker cranes, conveyors, shuttle cars, bridge cranes and other systems to move to warehouse target coordinates and ensures that storage and retrieval tasks are carried out with high precision.

Key Features – Your Advantage:

- >> Time-optimized positioning
- >> Motion paths are calculated based on distance, maximum acceleration and velocity
- >> Eliminates creeping speed
- >> Single axis control and skew control as well as optimized control for multiple axes
- >> Dynamic parameters enable velocity, acceleration and tolerance control while the machine is moving
- >> Ideal for new installations or as an advanced replacement for Trimble (Spectra Precision, Geotronics) ICS5000, TCS4000 and ASC systems



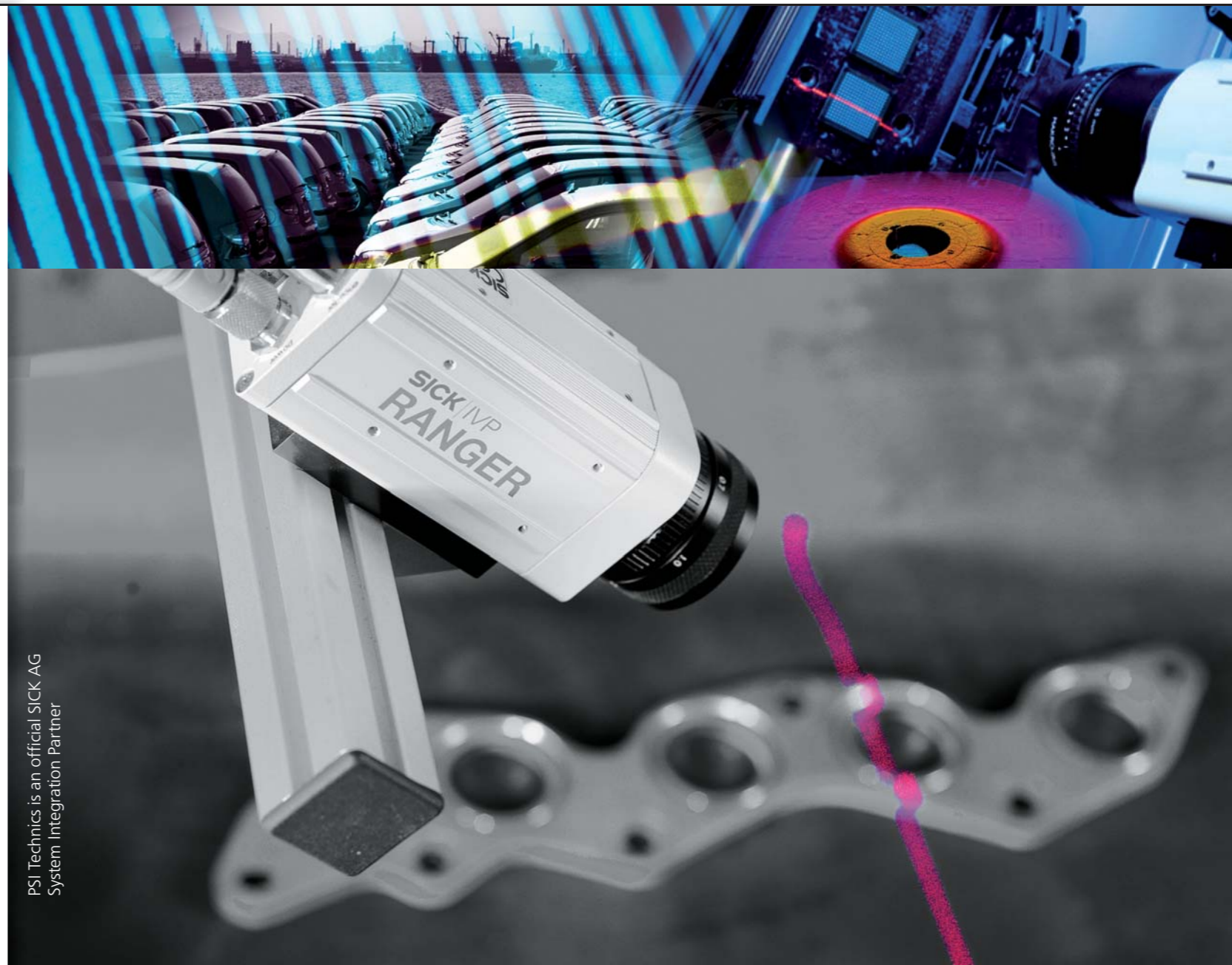
Industrial Image Processing

Digital Image Processing Systems Increase Quality and Productivity

PSI Technics offers industry-specific and application-specific solutions based on digital image processing systems that are designed for the continuous monitoring and quality control of production processes.

Using Advanced Image Processing for Monitoring Production Cycles – Your Advantage:

- >> Optimized production processes
- >> Reduced expenses for manual and/or visual tests and inspections, e.g. measuring, locating, checking and identifying components
- >> Safe identification of defective products during manufacturing
- >> Avoids production downtime caused by interference
- >> Replaces several sensors with one flexible camera
- >> Quality assurance: increased product quality and productivity
- >> Reduces costs
- >> Increases customer satisfaction



PSI Technics is an official SICK AG
System Integration Partner

Thermal Protection of Sensors

Thermo Protection Cooling Case Protects Sensitive Sensors in High-Temperature Environments

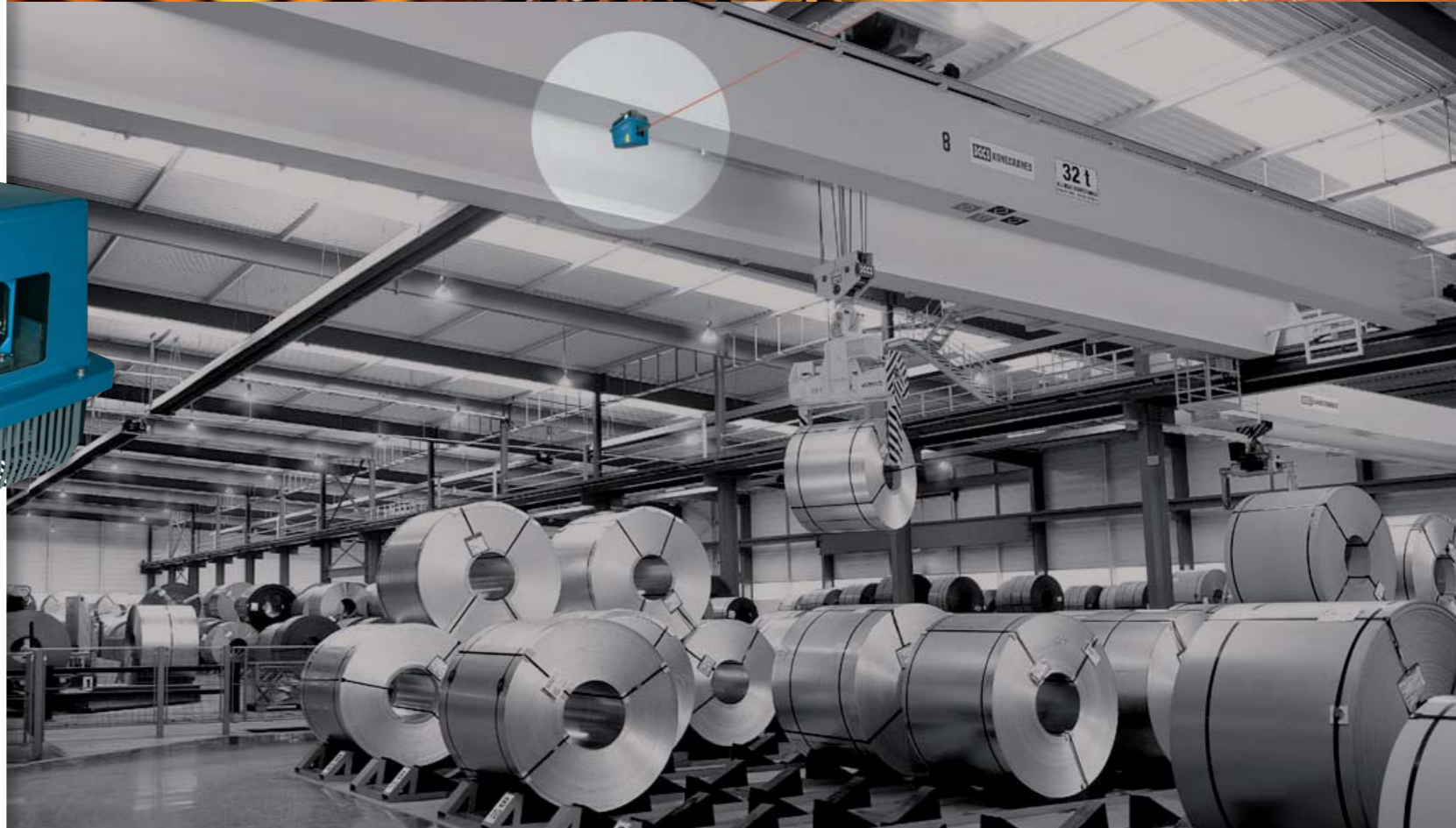
The innovative and award-winning Thermo Protection Cooling Case (TPCC) ideally protects sensitive optical sensors, such as laser distance sensors or optical data transfer systems, from high temperatures (up to 176°F) or extreme temperature fluctuations.

Typical TPCC Applications:

- >> Metal industry – particularly steel and aluminum
- >> Paper industry
- >> Food industry
- >> Aircraft and automotive industry
- >> Surface technology
- >> Ceramics industry
- >> General logistics, and many more

Your Advantage:

- >> Significantly increases diode performance of optical laser systems
- >> Enables the use of optical sensors at temperatures of up to 176°F (+80°C)



EMC Analysis

Electromagnetic Compatibility Analysis

Electro-magnetic interference can cause operating problems as well as costly downtime of electrical and electronically-controlled devices, machines and facilities (e.g., industrial facilities, production lines and electronic data processing systems). It can even pose health risks to your workforce.

Our Services:

- >> EMC consulting, measuring, analyzing and eliminating EMC interference
- >> Laboratory and on-site EMC analyses
- >> CE inspections

Your Advantage:

- >> Increased process safety
- >> Reduced downtimes
- >> Early detection of interferences that pose health risks to your workforce



Temperature & Humidity Analysis / Monitoring

Early Detection of Weak Spots and Interferences Avoids Consequential Damages

Miniature data loggers are used to strategically record long-term ambient temperature and humidity. This allows for an easy and reliable monitoring of areas that require a precise, diversified and detailed temperature control: laboratories, production facilities, test assemblies, clean rooms, galleries and museums, storage and transport.

Your Advantage:

- >> Damage prevention and increased operational safety
- >> Identification and documentation of plant conditions and potential safety risks
- >> Complete temperature analysis and monitoring of logistic processes



Research Projects and Feasibility Studies for External Clients



Aside from developing innovative solutions for our expanding portfolio of products and services PSI Technics offers research and development services for clients from a wide range of industries.

Working with a large number of committed and qualified developers, engineers and application experts, and partnering with the University of Applied Science at Koblenz, PSI Technics benefits from working with a pool of specialists from diverse disciplines. Our development efforts focus on electrical engineering, conveyor and positioning systems, image processing, energy efficiency, and energy management.

Due to our extensive expertise we are well equipped for taking on projects in a variety of fields. We invite you to put us to the test! When you need additional resources or external support in the fields of research and development, we encourage you to leverage our skills, experience and expertise.

Awards:



Renowned Companies That Demand High Quality



Our products and solutions are used by renowned international companies across all industries, for example:

ABL Technic,
Aleris,
Aluminium Norf,
Amazonen Werke,
August Dreckshage,
Boeing,
Corus,
Döhler,
Daimler,
Edelstahlwerke Südwestfalen,
Erbslöh Aluminium,
Exxon Mobil,

Grainger,
Griwe,
HACTL Hong Kong Air
Cargo Terminals Limited,
Hydro Alluminio,
Iveco,
Konecranes,
Korean Air,
Novelis,
Ovako,
Protec,
Ramatex,

Rhodium,
RR Donnelley,
S&C Electric Company,
Salzgitter Stahlhandel,
Sandvik A.B,
Schüco International,
SIBELCO Deutschland GmbH
(previously WBB Fuchs),
Solvay Chemicals,
Stahlton Bauteile,
Stollwerk,
TRW Automotive,
Volkswagen

STORAGE & RETRIEVAL SIMPLIFIED. INCREASE QUALITY. SAVE ENERGY.



**Positioning Solutions
International Technics Ltd.**

Rudolf-Diesel-Str. 21a | 56220 Urmitz | Germany
Phone: +49 (0) 2630 91590-0 | Fax: +49 (0) 2630 91590-99
info@psi-technics.com